

# Ford Ecosport Car GPS Navigation Entertainment System

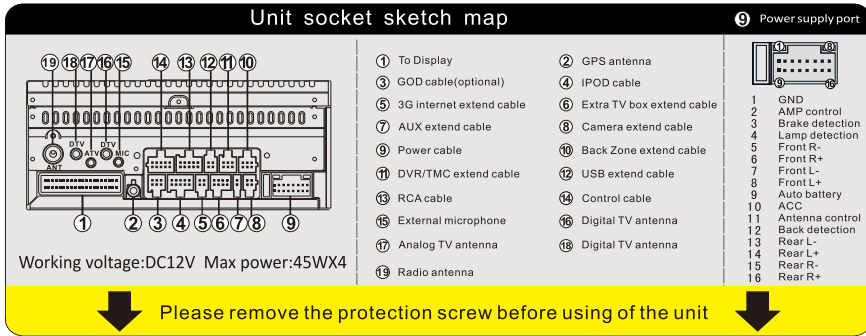
## Installation manual and cautions

### Tools:

- 1.Sleeve
- 2.Plastic Crowbar
- 3.3M Electronic Tape
- 4.3M Double-side Tape
- 5.Cotton Cloth
- 6.Screwdriver



### Port Sketch Map



▲ Please take this brochure as reference. If there is any changeable information , it might not be notified. The company owns the right of final explanation.

### Installation Steps



1.The appearance of Ford Ecosport



2.The dashboard picture



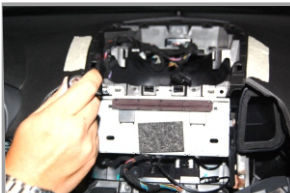
3.With the lever prize panel in the dashboard area, remove the display frame



4.Remove the fixed screws on the screen, and pull off the connecting screen cables, then remove the screen.



5.Remove the fixed screw on decorative panel , and remove the decorative panel



6.Remove the fixed screw on the host, and remove the host



7.The appearance of removing the host



8. Our specail car DVD player for Ford Ecosport



9. Our specail car DVD player for Ford Ecosport

### Inspection and confirmation

Inspect entire car



Check out all installation and make sure whether it has reversed or not

Turn on the unit and GPS mode, testing mapt



Testing navigation card and navigation antenna, make sure whether it has been connected correctly or not. It should be able to search and locate GPS.

Turn on radio mode, searching radio stations automatically



Check out radio signal and whether the radio antenna works or not

Turn on DVD mode, testing DVD/CD disc



Check out disc/laser head works well or not

Turn on USB/SD mode, testing USB/SD flash disk



Check out whether USB cable works well or not, SD card connection as well

Turn on Bluetooth mode, confirming whether cell phone can connect with it or not



Confirm Bluetooth function, linking to Bluetooth and working well or not

Turn on Head Light and Reverse Gear, checking unit button lights and Reverse function



Check out that user settings are all correct and all cables have been connected well

Turn on sound effect mode, manual adjustment testing



Check out sound track and balance function

Verify relevant air conditioner information (support unit with this function)

### Notice

#### 1、 The installation requirements

1.1. In order to ensure the safety and usage of the product, please commissioned by professional technicians for installation. In addition, to avoid damage and accident, please do not disassemble the host privately.

1.2. Before installation, please start the engine to check the dashboard function display and button operation whether is normal; The car inside and outside surface whether have the squandering phenomenon, please reflect to customers if have any problems.

1.3. To prevent damage to the seat or interior trim, the installers should put down metal goods and other hard objects before installation.

1.4. To avoid squandering the car dashboard, please pay attention to put away the car components when install. In the same time, the wiring debris should be deal with in time and don't stay in the car. Moreover, the cable joints must be insulated to prevent short circuits.

1.5. The wire arrangement must be reasonable. Normally, the space for installation is limited, it is recommended to reduce the unnecessary wirings to make the head unit easy to install and access. The cables and wirings to the head unit (e.g. GPS antenna, iPod cable, reversing camera cable, etc.) must be routed properly to avoid touching any moving parts, such as steering wheel column, acceleration pedal and brake pedal. All the cables must be bonded properly to against any loose during driving.

1.6. To avoid damage the host or accessory, please don't disconnect the harness and accessory when the host turn on.

1.7. If need to install the reverse camera, please enter into the setting menu to choose reverse power on.

#### 2、 Navigation antenna position requirements

2. 1. Please route the GPS antenna cable and power cable individually, and keep them away from the data cable to against any signal interference. The GPS antenna is recommended to be installed on the roof for better signal reception, it can also be fixed inside the car such as lower part of the front windscreen with 3M double side sticky tape.

2.2. To obtain better signal reception, the antenna must be positioned horizontally facing the sky. Any window tint may affect the GPS signal reception, it is recommended to cut the tint above the antenna off to get better GPS signal reception.

2.3. After installation , process the GPS positioning signal receiving adjustment.

**Important warning: In order to avoid damage the map data, the map is prohibited to pull out when the map is in running.**

#### 3、 The host usage notice

3.1. Please do not allow the screen to suffer the moisture, dust, vapor, smoke this pollution.

3. 2. Please do not use thinner or other chemical cleaner to wipe the screen ; customers should use soft cloth to wipe the dirt in the screen.

3.3. To avoid damage the screen, please use the touch pen to operate on a touch screen, and can not use sharp objects to operate the host.